



Okta 2000 ATEX

Roots pump with a pumping speed of 1,080 to 2,585 m³/h:



 伯東
Hakuto

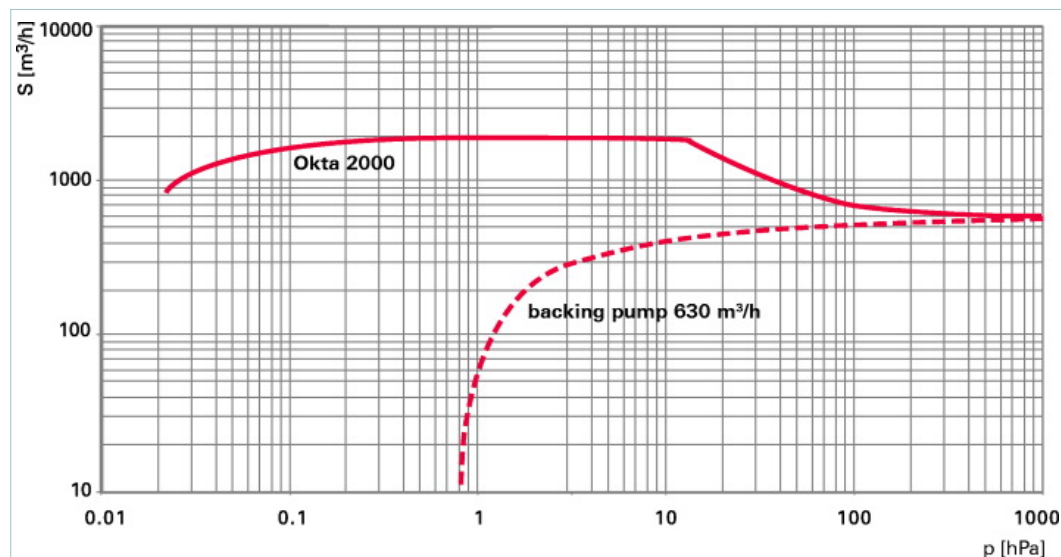
PFEIFFER  VACUUM



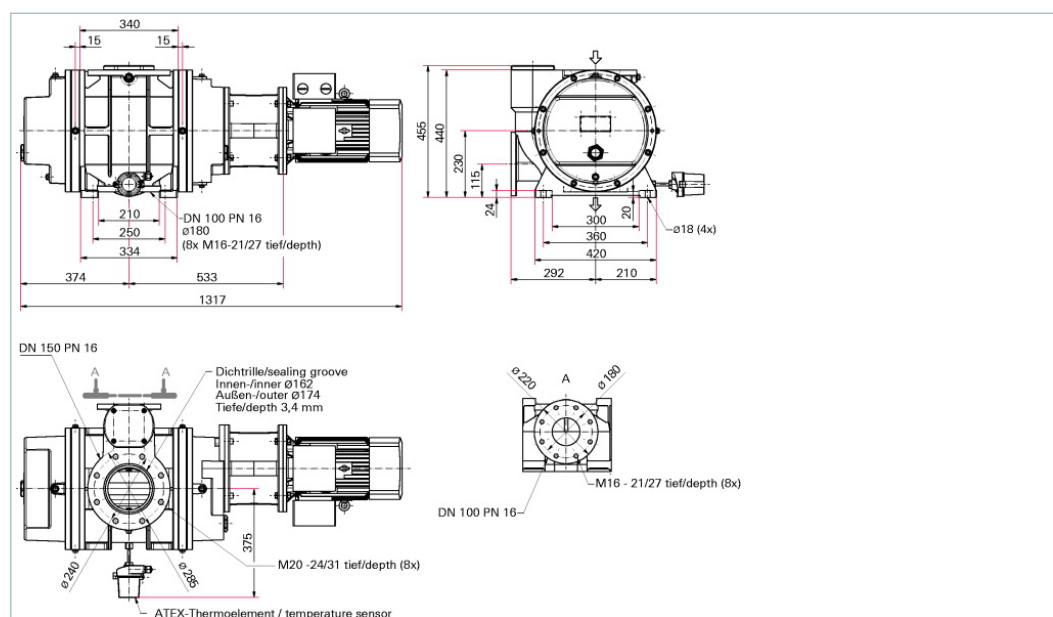
Similar Image

Okta 2000 ATEX, Roots pump, 230/400 V, 50 Hz; 265/460 V, 60 Hz; II 2G IIB T3 +5 °C T_a +40 °C

- High-performance Roots pump with a pumping speed of 1080 to 2585 m³/h
- Blocked overflow valve
- For operation with frequency converter or switch-on at a defined backing pressure, i.e. for continuous processes
- With 3-phase motor II 2G Ex de IIC T4
- Pumps are hermetically sealed (leak rate < 1 · 10⁻⁶ Pa m³/s) - risk of zone entrainment is minimized
- Pressure surge resistance according to EN 1333, PN level 16
- Explosion safety due to reliable construction and temperature monitoring – installation without additional flame arrester possible
- Note: For the operation of the pumps, the terms of the operating instructions apply. We are pleased to provide you with the right solution for your application!
- Working conditions: Pump is inside and outside suitable for operation in equipment class II, equipment category 2(G) for gases and vapors of explosion class IIA and IIB, temperature class T3 according directive 94/9/EC.



Dimensions



Technical Data		Okta 2000 ATEX, Roots pump, 230/400 V, 50 Hz; 265/460 V, 60 Hz; II 2G IIB T3 +5 °C T _a +40 °C
Ambient temperature	5-40 °C 41-104 °F 278-313 K	
Cooling method, standard	Air	
Emission sound pressure level (EN ISO 2151) at intake pressure 10 hPa	75 dB (A)	
Emission sound pressure level (EN ISO 2151) at intake pressure 1 hPa	72 dB (A)	
Flange (in)	DN 150 PN 16	
Flange (out)	DN 100 PN 16	
Leak rate	1 · 10 ⁻⁶ Pa m ³ /s 7.5 · 10 ⁻⁶ Torr l/s 1 · 10 ⁻⁵ mbar l/s	
Mains requirement: voltage 50 Hz	230/400 V	
Mains requirement: voltage 60 Hz	265/460 V	
Motor protection	3TF	
Nominal pumping speed	1080-2585 m ³ /h	
Nominal pumping speed at 50 Hz	2155 m ³ /h	
Nominal pumping speed at 60 Hz	2585 m ³ /h	
Nominal rotation speed at 50 Hz	3000 min ⁻¹	
Nominal rotation speed at 60 Hz	3600 min ⁻¹	
Operating fluid	P3	
Operating fluid filling	5 l	
Protection category	IP 55	
Rated power 50 Hz	5.5 kW	
Rated power 60 Hz	6.3 kW	
Rotation speed	1500-3600 min ⁻¹	
Rotation speed max.	3600 min ⁻¹	
Rotation speed min.	1500 min ⁻¹	
Version	Ex II 2G IIB T3 X +5 °C ≤ T _a +40 °C with motor, magnetic coupling and blocked overflow-valve	
Weight: with motor	390 kg 859.79 lb	
Weight: without motor	340 kg 749.56 lb	

Order number	
Okta 2000 ATEX	PP W63 400

Accessories	
Blank flange sets	
Blank flange set (Stainless steel) for Okta 1000 / M / ATEX / Okta 2000 / M / ATEX, DN PN16/PN10	PP 043 885 -T
DN PN16/PN10	
Mounting bolts (Zinc-plated Steel) for Okta 2000 / M / ATEX, DN PN16/PN10	PP 144 117 -T
Sealing kits	
Seal kit (FKM) for Okta 1000 / M / ATEX, DN PN16/PN10	PP 043 886 -T