



Okta 500

Roots pumps with a pumping speed of 280 to 840 m³/h:





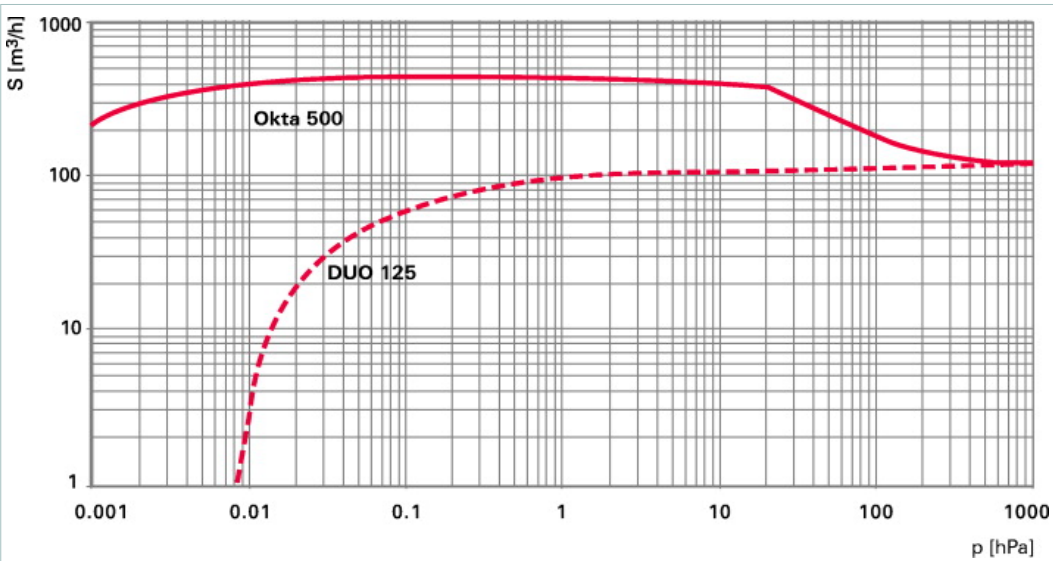
Similar Image

Okta 500, Roots pump, 230/400 V, 50 Hz; 265/460 V, 60 Hz

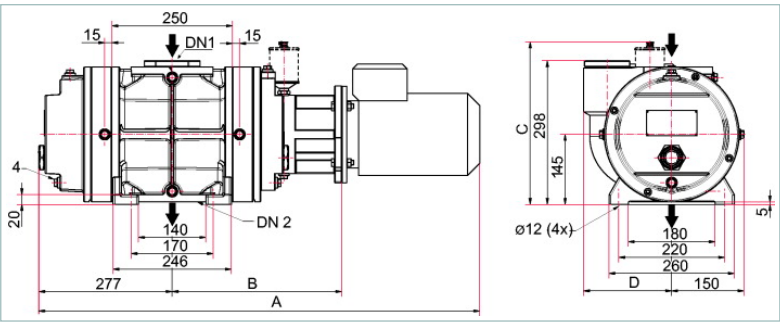
- High-performance Roots pump with a pumping speed of 280 to 840 m³/h
- With 3-phase motor, IE2
- No thermal overload thanks to integral overflow valve
- For applications in the low and medium vacuum

Okta = Standard pumps with radial shaft sealing rings, housing parts made of gray cast iron or nodular graphite cast iron, flange connection in accordance with ISO-F

Okta M = Standard pumps, hermetically sealed thanks to magnetic coupling, housing parts made of gray cast iron or nodular graphite cast iron, flange connection in accordance with ISO-F



Dimensions



A	915 mm
B	352 mm
C	337 mm
D	183 mm
DN 1	DN 100 ISO-F
DN 2	DN 100 ISO-F

Technical Data

Okta 500, Roots pump, 230/400 V, 50 Hz; 265/460 V, 60 Hz

Ambient temperature	5-40 °C 41-104 °F 278-313 K
Cooling method, standard	Air
Differential pressure at the overflow valve	75 hPa 56.25 Torr 75 mbar
Emission sound pressure level (EN ISO 2151) at intake pressure 10 hPa	75 dB (A)
Emission sound pressure level (EN ISO 2151) at intake pressure 1 hPa	70 dB (A)
Flange (in)	DN 100 ISO-F
Flange (out)	DN 100 ISO-F

Technical Data		Okta 500, Roots pump, 230/400 V, 50 Hz; 265/460 V, 60 Hz
Leak rate		$1 \cdot 10^{-3} \text{ Pa m}^3/\text{s}$ $7.5 \cdot 10^{-3} \text{ Torr l/s}$ $1 \cdot 10^{-2} \text{ mbar l/s}$
Mains requirement: voltage 50 Hz		230/400 V
Mains requirement: voltage 60 Hz		265/460 V
Motor protection		3TF
Nominal pumping speed		280-840 m ³ /h
Nominal pumping speed at 50 Hz		560 m ³ /h
Nominal pumping speed at 60 Hz		670 m ³ /h
Nominal rotation speed at 50 Hz		3000 min ⁻¹
Nominal rotation speed at 60 Hz		3600 min ⁻¹
Operating fluid		P3
Operating fluid filling		1.5 l
Protection category		IP 55
Rated power 50 Hz		1.5 kW
Rated power 60 Hz		1.8 kW
Rotation speed		from 1500 to 4500 min ⁻¹
Rotation speed max.		4500 min ⁻¹
Rotation speed min.		1500 min ⁻¹
Version		Standard with motor
Weight: with motor		132 kg 291.01 lb

Order number	
Okta 500	PP W31 000

Accessories	
Accessories	
Oil level monitoring 20-250 V AC for Okta 250 / M / Okta 500 / M / Okta 1000 / M / Okta 2000 / M / Okta 4000 / M / Okta 6000 / M, G 1 1/4	PK 004 930 -U
Oil level monitoring 24 V DC for Okta 250 / M / Okta 500 / M / Okta 1000 / M / Okta 2000 / M / Okta 4000 / M / Okta 6000 / M, G 1 1/4	PK 005 639 -U
Adjusting elements for fastening the feet.	
Setting elements for foot mounting for Okta 250 / M / Okta 500 / M / Okta 1000 / M, 35 mm	PP 041 454 -T
Blank flange sets	
Blank flange set (Stainless steel) for Okta 500 / M, DN ISO-K	PP 042 665 -T
Blank flange set (Stainless steel) for Okta 500 / M / ATEX, DN PN16/PN10	PP 042 666 -T
Blank flange set for Okta 500 / M, Stainless steel	PP 042 664 -T
DN ISO-F	
Mounting bolts (Stainless steel) for Okta 500 / M, DN ISO-F	PP 042 655 -T
Mounting bolts (Zinc-plated Steel) for Okta 500 / M, DN ISO-F	PP 042 645 -T
DN ISO-K	
Claw set (Stainless steel) for Okta 500 / M, DN ISO-K	PP 042 660 -T
Claw set (Zinc-plated Steel) * for Okta 500 / M, DN ISO-K	PP 042 662 -T
Claw set (Zinc-plated Steel) for Okta 500 / M, DN ISO-K	PP 042 661 -T
DN PN16/PN10	
Mounting bolts (Zinc-plated Steel) for Okta 500 / M / ATEX, DN PN16/PN10	PP 042 663 -T
Frequency converter	
Frequency converter (Complete with control box) Okta 500 / M	PP 078 296 -T
Gear chamber evacuation	
Gear box exhaust (Flexible hose) for Okta 250 / M / Okta 500 / M, G 3/8 (3x)	PP 041 456 -T
Gear box exhaust (Plastic hose) for Okta 1000 / M, G 3/8 (3x)	PP 041 455 -T
Oil compensating line (with oil level monitoring)	
Oil compensating line with oil level monitoring for Okta 250 / M / Okta 500 / M, G 3/8 (4x), G 1 1/4 (1x)	PP 031 446 -T
Purge gas kit	
Sealing gas kit for Okta 250 / M / Okta 500 / M / Okta 1000 / M / Okta 2000 / M / Okta 4000 / M / Okta 6000 / M / Okta 8000 / Okta 1500 G / Okta 4000 G / Okta 8000 G, G 3/8 (4x)	PP 027 401 -T
Sealing kits	
Centering ring with outer ring for vacuum flange for Okta 500 / M / Okta 500 G, DN ISO-F	PF 303 110 -T
Seal kit (FKM) for Okta 500 / M / ATEX, DN PN16/PN10	PP 042 667 -T
Splinter shield	
Splinter shield for Okta 500	PP 042 350 -X
Splinter shield for Okta 500/500 M/500 G	PP 030 149 AX

Accessories	
Sprayer	
Sprayer DN ISO-F for Okta 500 / M / Okta 500 G	PP 042 649 -T
Sprayer DN PN16/PN10 for Okta 500 / M	PP 042 650 -T
Temperature sensor	
Temperature sensor for Okta 250 / M / Okta 500 / M / Okta 1000 / M / Okta 2000 / M / Okta 4000 / M / Okta 6000 / M / Okta 500 G / Okta 1500 G / Okta 4000 G, G 3/8	PP 041 457 -T
Consumables	
P3, mineral oil, 1 l	PK 001 106 -T