

BA 251

Single-stage, rotary vane pump with a pumping speeds of 250
 m^3/h



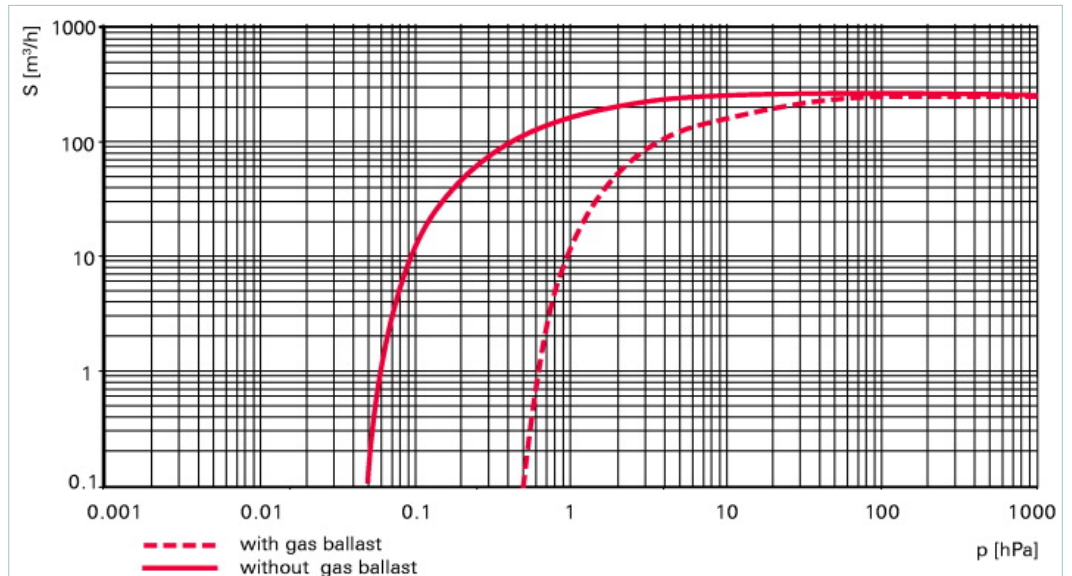
PFEIFFER  **VACUUM**



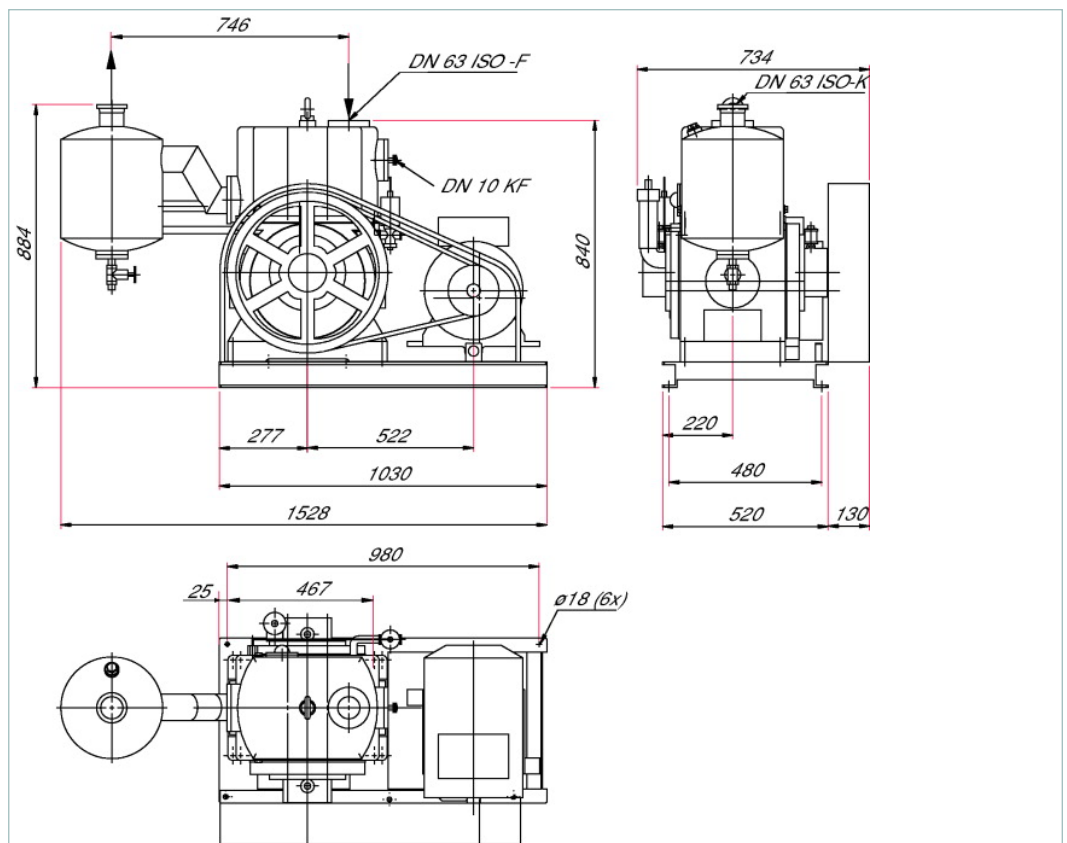
Similar Image

BA 251, 3-phase motor, 265-460 V, 60 Hz, without HV safety valve

- Single-stage, high-performance rotary vane pump with a pumping speed of 250 m³/h
- 3-phase motor for 265/460 V (± 5 %), 60 Hz supply voltage
- Process integrity thanks to integrated gas ballast valve
- Without HV safety valve
- For low and medium vacuum applications



Dimensions



Technical Data		BA 251, 3-phase motor, 265-460 V, 60 Hz, without HV safety valve
Ambient temperature		12-40 °C 53.6-104 °F 285-313 K
Cooling method, standard		Water
Cooling water consumption		> 50 l/h
Cooling water pressure		2,000-10,000 hPa 1,500-7,500 Torr 2,000-10,000 mbar
Cooling water temperature		10-30 °C 50-86 °F 283-303 K
Emission sound pressure level without gas ballast at 60 Hz		≤ 63 dB (A)
Exhaust pressure, max.		1,500 hPa 1,125 Torr 1,500 mbar
Exhaust pressure, min.		Atmospheric pressure hPa
Flange (in)		DN 63 ISO-F
Flange (out)		DN 63 ISO-K
Mains requirement: voltage 60 Hz		265/460 (± 5%) V
Motor protection		3TF
Motor version		3-phase Motor
Nominal rotation speed at 60 Hz		1800 min ⁻¹
Nominal rotation speed pump, 60 Hz		490 min ⁻¹
Operating fluid		P3
Operating fluid filling		17 l
Protection category		IP 55
Pumping speed at 60 Hz		250 m ³ /h
Rated power 60 Hz		13 kW
Rotation speed at 50 Hz		490 min ⁻¹
Temperature: Operating		80 °C 176 °F 353 K
Ultimate pressure with gas ballast		1 hPa 0.75 Torr 1 mbar
Ultimate pressure without gas ballast		5 · 10 ⁻² hPa 3.75 · 10 ⁻² Torr 5 · 10 ⁻² mbar
Weight: with motor		570 kg 1,256.62 lb
Order number		
BA 251		PK C42 637

Accessories	
Accessories	
KAS 63, condensate separator for pumping speeds up to 250 m ³ /h	PK Z10 010
KLF 063, cold trap	PK Z80 010
ONF 100, oil mist filter for pumping speeds up to 300 m ³ /h	PK Z40 012
ZFO 063, zeolite trap	PK Z70 010
Accessories HenaLine	
SAS 63 dust separator, DN 63 ISO-K, polyester filter	PK Z60 511
Accessories UnoLine	
SAS 16, DN 16 ISO-KF, polyester filter	PK Z60 506
Accessories UnoLine Plus	
Conversion kit for gas ballast valve to KF connection	PK 133 863 -T
Cooling water connection unit for BA 251/501	PK 133 100 -T
FAK 063, activated carbon filter	PK Z30 010
Magnetic gas ballast valve 220 V - 50 Hz	PK V52 001
Oil return unit, ORF 005, standard version	PK Z90 065
Operating fluid level monitoring, 24 V DC for BA 251/501	PK 133 115 -T
Pressure monitor for cooling water circulation system BA 251/501	P 4747 161 MF
PTC-resistor tripping device	P 4768 051 FQ
Resistance thermometer PT 100	PK 132 101 -T
VFS 010, Air venting valve 24 V DC	PK V52 024
Vibration isolators for BA 251/501	PK 132 855 -T
Angle valves, electropneumatic, with PI, with PV, DN 63 to 160 ISO-K	
EVb 063 PA, Angle valve, electropneumatic, with PI, with PV, 24 V DC	PF B18 201
ISO-K Reducer, Straight	
Reducer, Straight, Stainless Steel 304/1.4301, DN 100/63 ISO-K	320RRG100-063-50
Consumables	
P3, mineral oil, 1 l	PK 001 106 -T
P3, mineral oil, 5 l	PK 001 107 -T
P3, mineral oil, 20 l	PK 001 108 -T