

Hepta 630

Dry screw pumps with a pumping speed of 630 m³/h at 50/60 Hz:





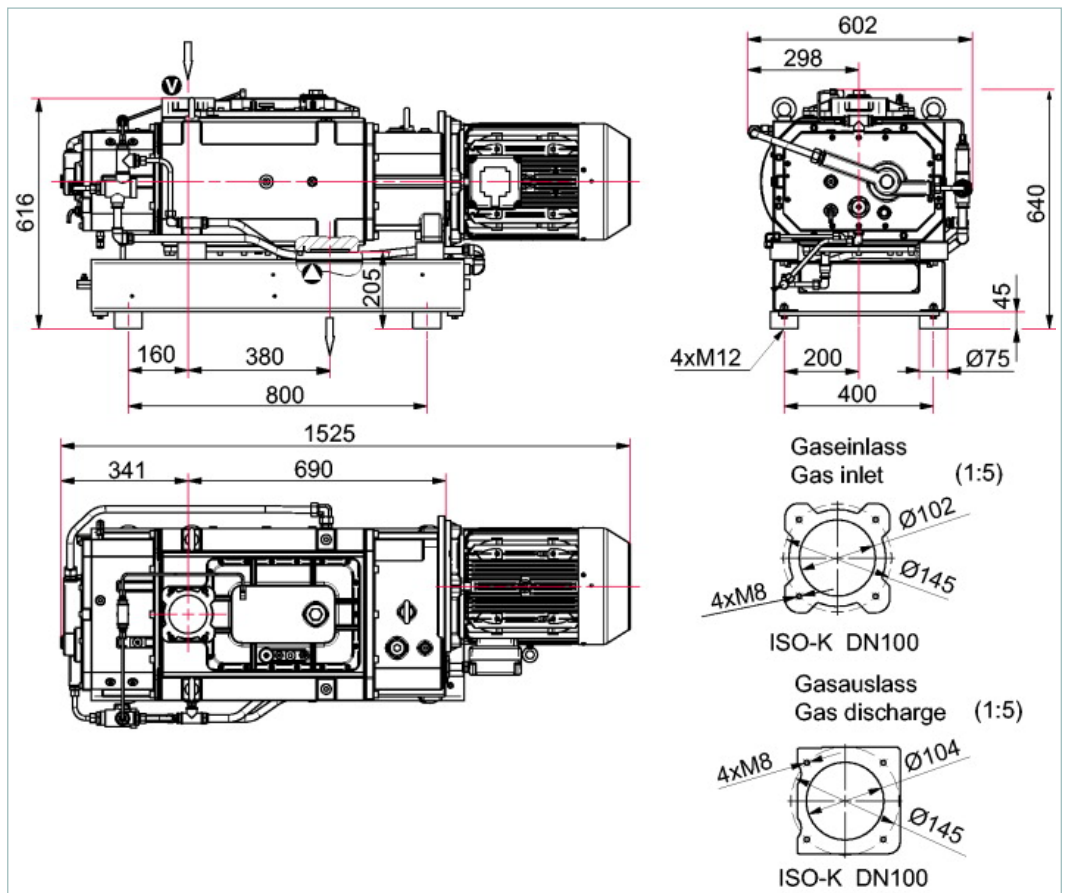
Similar Image

Hepta 630 P, 220/380 V, 60 Hz

- High-performance screw pump with a pumping speed of 630 m³/h
- For mains voltage: 220-380 V, 60 Hz
- Ideal solution for all areas in which oil-free vacuum is required
- Lower energy costs thanks to internal compression
- For applications in the low and medium vacuum

Process-adapted designs and differing voltages upon request

Dimensions



Technical Data	Hepta 630 P, 220/380 V, 60 Hz
Ambient temperature	5-50 °C 41-122 °F 278-323 K
Cooling water consumption	12 l/min
Cooling water pressure	1,000-6,000 hPa 750-4,500 Torr 1,000-6,000 mbar
Cooling water temperature	10-30 °C 50-86 °F 283-303 K
Exhaust pressure max.	1,200 hPa 900 Torr 1,200 mbar
Flange (in)	DN 100 ISO-K
Flange (out)	DN 80 PN 16
Mains requirement: voltage 60 Hz	220-380 V
Motor rating 60 Hz	17 kW
Nominal pumping speed at 60 Hz	630 m ³ /h
Nominal rotation speed at 60 Hz	3600 min ⁻¹
Operating fluid	D1
Operating fluid filling	1.3 l

Technical Data	Hepta 630 P, 220/380 V, 60 Hz
Protection category	IP55
Sound pressure level	75 dB (A)
Ultimate pressure	1 · 10 ⁻² hPa 7.5 · 10 ⁻³ Torr 1 · 10 ⁻² mbar
Weight	550 kg 1,212.53 lb

Order number	
Hepta 630	PU V61 433

Accessories	
Accessories HenaLine	
SAS 100 dust separator, DN 100 ISO-K, polyester filter	PK Z60 512
Accessories UnoLine Plus	
PTC-resistor tripping device	P 4768 051 FQ
Consumables	
D1, synthetic diester based oil, 1 l	PK 005 875 -T
D1, synthetic diester based oil, 5 l	PK 005 876 -T
D1, synthetic diester based oil, 20 l	PK 005 877 -T