



CCR 365, 0.1 Torr F.S., pipe OD 1/2"



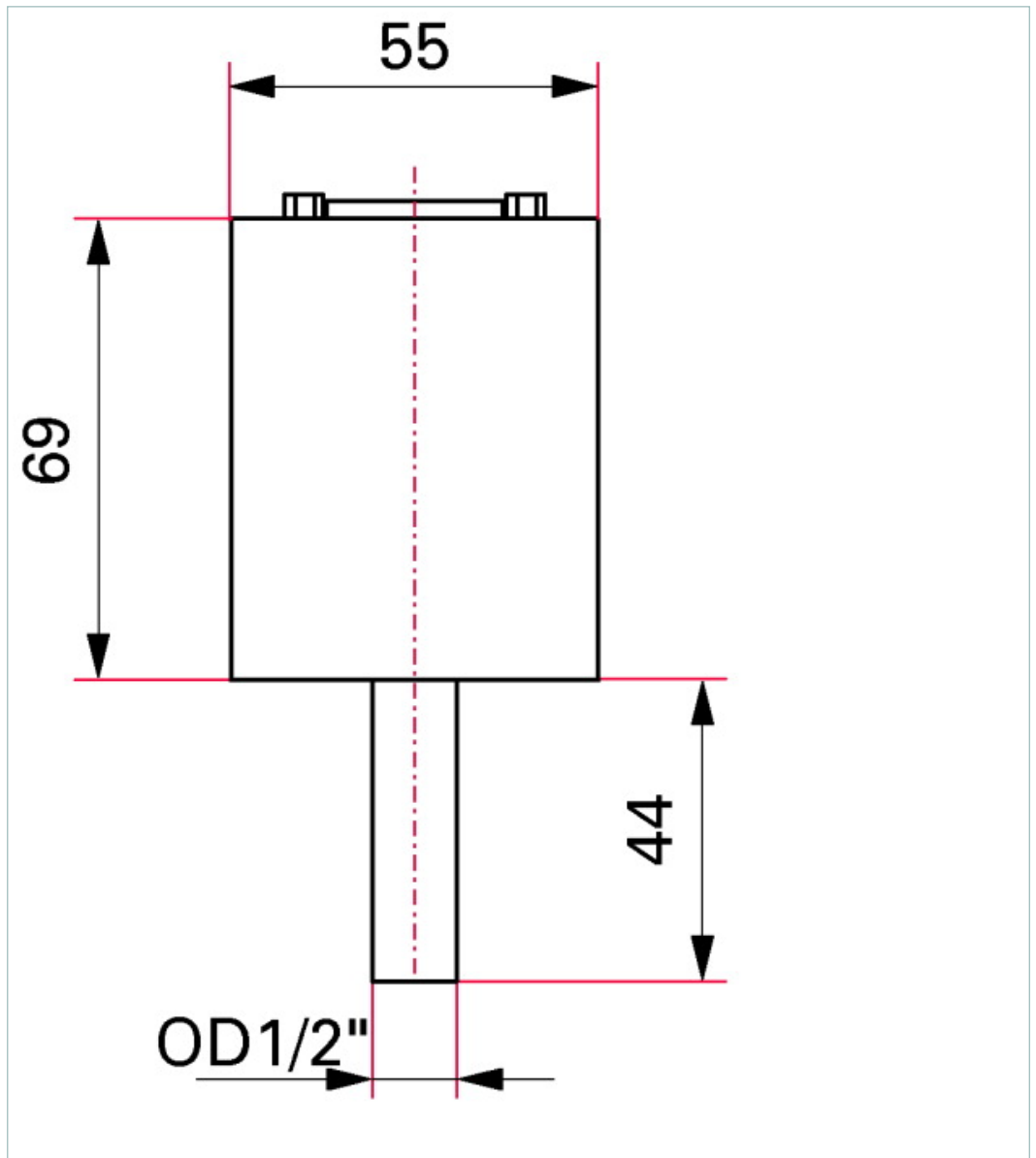


Similar Image

CCR 365, 0.1 Torr F.S., pipe OD 1/2"

- Precise pressure measurement independent of type of gas
- Measurement range up to four decades
- Connector plug D-sub 15-pole, output signal and plug-and-socket connector compatible with MKS Baratron®
- Measurement range from $1 \cdot 10^{-5}$ hPa to 0.13 hPa ($1 \cdot 10^{-5}$ Torr to 0.1 Torr)
- Accuracy: 0.5 % of measurement
- Supply voltage: 14 – 30 V
- Output signal: 0 – 10 V
- Ceramic technology sensor
- No memory effects
- Precise temperature compensation
- Minimal zero drift
- Output signal an connector compatible with MKS Baratron
- Calibration test report included in delivery

Dimensions



Technical Data	CCR 365, 0.1 Torr F.S., pipe OD ½"
Accuracy	0.50 % of reading
Bakeout temperature max. at the flange	≤ 110 °C ≤ 230 °F ≤ 383 K
Full Scale	0.1 Torr
Measurement range max.	0.13 hPa 0.1 Torr 0.13 mbar
Measurement range min.	1 · 10 ⁻⁵ hPa 7.5 · 10 ⁻⁶ Torr 1 · 10 ⁻⁵ mbar
Membrane and measuring chamber	Ceramics (Al ₂ O ₃ 99.5 %)
Method of measurement	Capacitance
Nominal diameter	Pipe OD ½"
Output signal: Minimum load	> 10 kΩ
Output signal: Pressure range	0-10 V
Pipe and flange	Stainless steel
Pressure max.	1,300 hPa 975 Torr 1,300 mbar
Protection category	IP30
Resolution	0.003 % F.S.
Response time	130 ms
Sensor cable length	100 m (0.14 mm ² conductor)
Supply: Power consumption max.	≤ 1 W
Supply: Voltage	14-30 V DC
Temperature: Operating	5-50 °C 41-122 °F 278-323 K
Temperature: Storage	-40-65 °C -40-149 °F 233-338 K
Temperature effect: on span	0.03 % of reading/°C
Temperature effect: on zero	0.02 % F.S./°C
Volume	≤ 3.6 cm ³
Weight	≤ 370 g

Order number	
CCR 365	PT R27 640