 Angle valves,  
electropneumatic, with PI,  
with PV, DN 63 to 160  
ISO-K





Similar Image

**EVB 160 PA, Angle valve, electropneumatic, with PI, with PV, 24 V DC**

- Bellows-sealed
- With visual position indicator
- Normally closed (n.c.)
- Service life: 1.5 million operating cycles

EVB = Angle valve with bellows feedthrough

PA = Aluminum housing

PX = Stainless steel housing

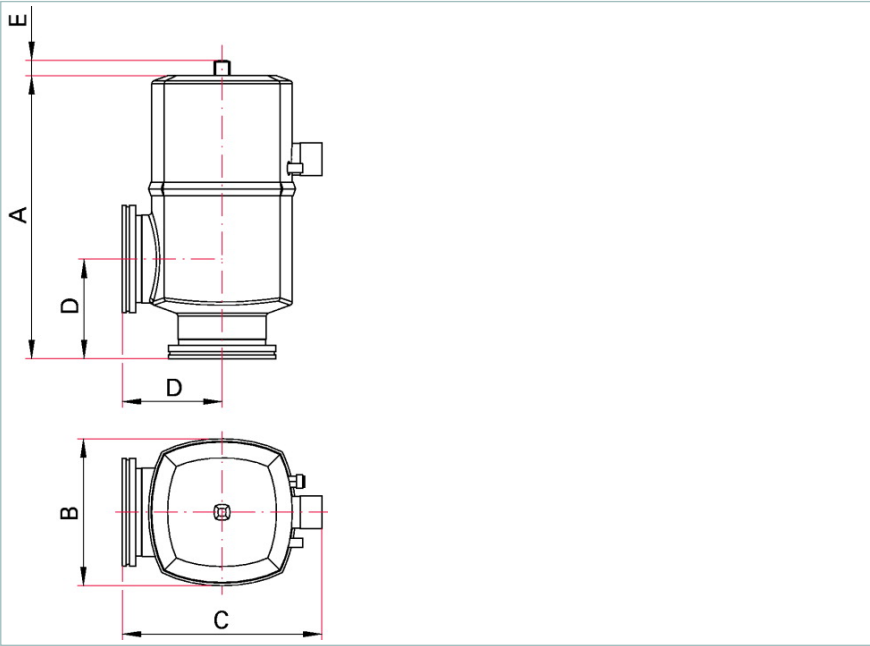
AC = Alternating current

DC = Direct current

PI = Position indicator

PV = Pilot valve

**Dimensions**



A	366 mm
B	215 mm
C	264 mm
D	138 mm
E	14 mm

Technical Data	EVB 160 PA, Angle valve, electropneumatic, with PI, with PV, 24 V DC
Bakeout temperature: actuator, pilot valve	60 °C   140 °F   333 K
Bakeout temperature: housing	80 °C   176 °F   353 K
Closing time	650 ms
Compressed air (overpressure) max.	8,000 hPa   6,000 Torr   8,000 mbar
Compressed air (overpressure) min.	4,000 hPa   3,000 Torr   4,000 mbar
Compressed air volume	570 cm <sup>3</sup>
Conductance for molecular flow	800 l/s
Control valve	Included
Differential pressure in closing direction	1,500 hPa   1,125 Torr   1,500 mbar
Differential pressure in opening direction	1,500 hPa   1,125 Torr   1,500 mbar
Electrical position indicator	Included
Electrical position indicator: Rating	250 V AC / 0,125 A ; 50 V DC / 0,25 A
Feedthrough	Bellows, stainless steel
Flange (in)	DN 160 ISO-K
Flange (out)	DN 160 ISO-K
Housing	Aluminum
Opening time	600 ms
Operating pressure max.	1500 hPa (abs.)
Operating pressure min.	1 · 10 <sup>-8</sup> hPa   7.5 · 10 <sup>-9</sup> Torr   1 · 10 <sup>-8</sup> mbar
Position feedback: Load capacity	250 V AC / 0.125 A ; 50 V DC / 0.25 A
Power pilot valve	3.1/2.2 W
Seal	FKM
Service life	1500000 cycles
Supply	24 V DC
Tightness	1 · 10 <sup>-10</sup> Pa m <sup>3</sup> /s   7.5 · 10 <sup>-10</sup> Torr l/s   1 · 10 <sup>-9</sup> mbar l/s
Type	Angle valve
Weight	11.4 kg   25.13 lb

**Order number**

Angle valves, electropneumatic, with PI, with PV, DN 63 to 160 ISO-K

**PF B38 201**