

# Flanges & Fittings - ISO Flanges & Hardware



## SPECIFICATIONS

**General:** Optional fastener or nonrotatable flanges with clearance bolt holes

**Nominal OD sizes:** ISO-63 to ISO-500

**Tube OD sizes:** 2 1/2 to 20 inches

## Materials

Flange: 304 or 316L stainless steel

O-rings: Viton, Buna

Bolts: 18-8 stainless steel

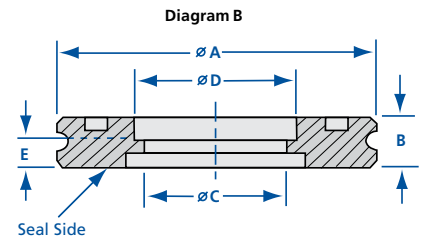
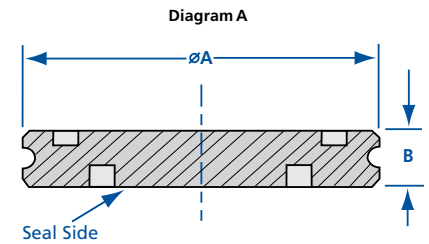
## Vacuum range

Elastomer seal:  $\geq 1 \times 10^{-8}$  Torr -High vacuum

EVAC metal seal:  $\geq 1 \times 10^{-11}$  Torr - UHV

## ISO Optional Fastener Flanges

MODEL NUMBER	DIAGRAM	NOMINAL ID	A	B	C	D	E
ISO-63-000-OF	A	-	3.740	0.47	-	-	-
ISO-63-250-OF	B	2 1/2	3.740	0.47	2.438	2.510	0.250
ISO-80-000-OF	A	-	4.331	0.47	-	-	-
ISO-80-300-OF	B	3	4.331	0.47	2.938	3.010	0.250
ISO-100-000-OF	A	-	5.118	0.47	-	-	-
ISO-100-400-OF	B	4	5.118	0.47	3.910	4.010	0.250
ISO-160-000-OF	A	-	7.087	0.47	-	-	-
ISO-160-600-OF	B	6	7.087	0.47	5.875	6.020	0.375
ISO-200-000-OF	A	-	9.449	0.47	-	-	-
ISO-200-800-OF	B	8	9.449	0.47	7.875	8.020	0.375
ISO-250-000-OF	A	-	11.417	0.47	-	-	-
ISO-250-1000-OF	B	10	11.417	0.47	9.875	10.020	0.375
ISO-320-000-OF	A	-	14.567	0.67	-	-	-
ISO-320-1200-OF	B	12	14.567	0.67	11.875	12.020	0.375
ISO-320-1275-OF	B	12	14.567	0.67	12.420	12.770	0.375
ISO-400-000-OF	A	-	17.716	0.67	-	-	-
ISO-400-1600-OF	B	16	17.716	0.67	15.624	16.020	0.375
ISO-500-000-OF	A	-	21.653	0.67	-	-	-
ISO-500-2000-OF	B	20	21.653	0.67	19.624	20.020	0.375

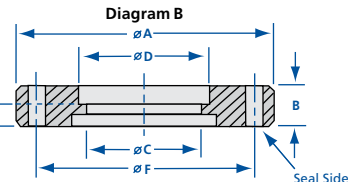
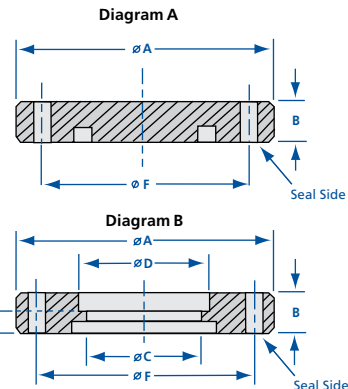


## ISO 316L Optional Fastener Flanges

MODEL NUMBER	DIAGRAM	NOMINAL ID	A	B	C	D	E
ISO-63-250-OF-316L	B	2 1/2	3.740	0.47	2.438	2.510	0.250
ISO-80-300-OF-316L	B	3	4.331	0.47	2.938	3.010	0.250
ISO-100-400-OF-316L	B	4	5.118	0.47	3.910	4.010	0.250

## ISO Nonrotatable Flanges

MODEL NUMBER	DIAGRAM	NOMINAL ID	A	B	C	D	E	F	BOLT HOLES	BOLT DIAMETER
ISO-63-000N	A	-	5.118	0.472	-	-	-	4.331	4	0.359
ISO-63-250N	B	2 1/2	5.118	0.472	2.438	2.510	0.250	4.331	4	0.359
ISO-80-000N	A	-	5.709	0.472	-	-	-	4.921	8	0.359
ISO-80-300N	B	3 1/2	5.709	0.472	2.938	3.010	0.250	4.921	8	0.359
ISO-100-000N	A	-	6.496	0.472	-	-	-	5.709	8	0.359
ISO-100-400N	B	4	6.496	0.472	3.910	4.010	0.250	5.709	8	0.359
ISO-160-000N	A	-	8.858	0.630	-	-	-	7.874	8	0.438
ISO-160-600N	B	6	8.858	0.630	5.875	6.020	0.375	7.874	8	0.438
ISO-200-000N	A	-	11.220	0.630	-	-	-	10.236	12	0.438
ISO-200-800N	B	8	11.220	0.630	7.875	8.020	0.375	10.236	12	0.438
ISO-250-000N	A	-	13.189	0.630	-	-	-	12.205	12	0.438
ISO-250-1000N	B	10	13.189	0.630	9.875	10.020	0.375	12.205	12	0.438
ISO-320-000N	A	-	16.732	0.787	-	-	-	15.551	12	0.551
ISO-320-1200N	B	12	16.732	0.787	11.760	12.020	0.375	15.551	12	0.551
ISO-320-1275N	B	12	16.732	0.787	12.420	12.770	0.375	15.551	12	0.551
ISO-400-000N	A	-	20.079	0.787	-	-	-	18.898	16	0.551
ISO-400-1600N	B	16	20.079	0.787	15.642	16.020	0.375	18.898	16	0.551
ISO-500-000N	A	-	24.016	0.787	-	-	-	22.835	16	0.551
ISO-500-2000N	B	20	24.016	0.787	19.642	20.020	0.375	22.835	16	0.551



REV 6/16