



HiPace[®] 300 for TCP 350, DN 100 ISO-F

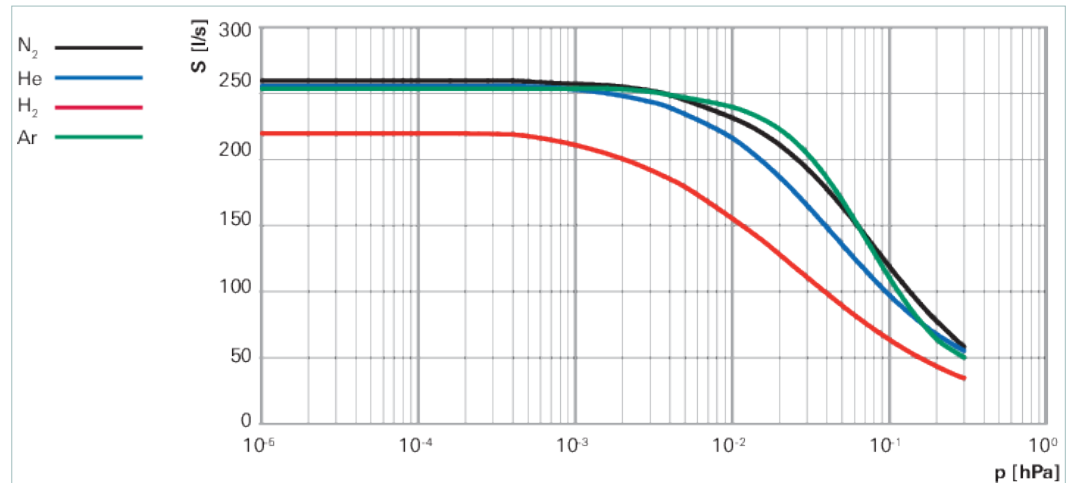




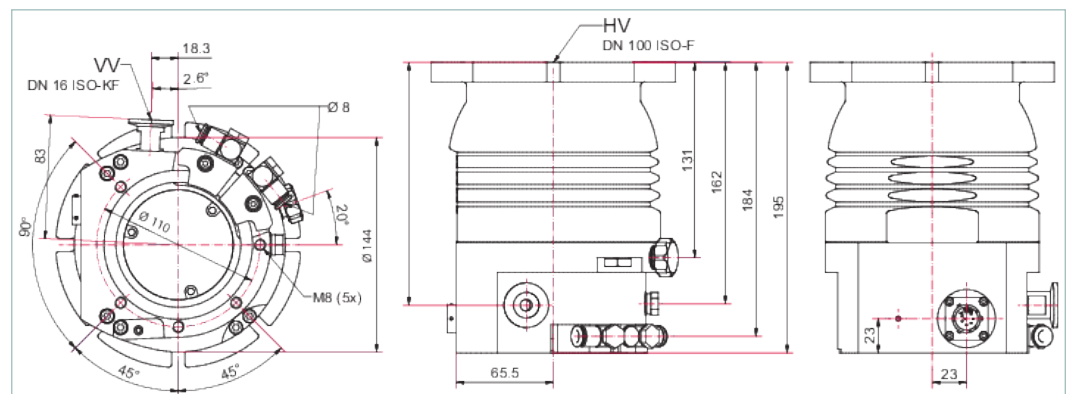
Similar Image

HiPace® 300 for TCP 350, DN 100 ISO-F

- Rugged, powerful turbopump with a pumping speed of up to 260 l/s for N₂
- For external TCP 350 drive electronics
- Ideal for applications that require separate installation of pump and drive
- For installation in any orientation
- Extensive accessories expand the range of applications



Dimensions



Technical Data	HiPace® 300 for TCP 350, DN 100 ISO-F
Bearing	Hybrid
Compression ratio for Ar	$> 1 \cdot 10^{11}$
Compression ratio for H ₂	$9 \cdot 10^5$
Compression ratio for He	$> 1 \cdot 10^8$
Compression ratio for N ₂	$> 1 \cdot 10^{11}$
Connection flange (in)	DN 100 ISO-F
Connection flange (out)	DN 16 ISO-KF/G 1/4"
Cooling method, optional	Air
Cooling method, standard	Water
Cooling water flow	50 l/h
Cooling water flow, max.	50 l/h
Cooling water flow, min.	50 l/h
Cooling water temperature	15-35 °C 59-95 °F 288-308 K
Electronic drive unit	for TCP 350
Final pressure without gas ballast	$< 1 \cdot 10^{-7}$ hPa $< 7.5 \cdot 10^{-8}$ Torr $< 1 \cdot 10^{-7}$ mbar

Technical Data	HiPace® 300 for TCP 350, DN 100 ISO-F
Fore-vacuum max. for N ₂	17 hPa 12.75 Torr 17 mbar
Gas throughput at full rotational speed for Ar	4 hPa·l/s
Gas throughput at full rotational speed for H ₂	> 14 hPa·l/s
Gas throughput at full rotational speed for He	11 hPa·l/s
Gas throughput at full rotational speed for N ₂	7 hPa·l/s
Mounting orientation	Any
Permissible radial magnetic field max.	5.5 mT
Protection category	IP54
Pumping speed for Ar	255 l/s
Pumping speed for H ₂	220 l/s
Pumping speed for He	255 l/s
Pumping speed for N ₂	260 l/s
Rotation speed ± 2 %	60,000 rpm 60,000 min ⁻¹
Rotation speed variable	35 – 100 %
Run-up time	2.5 min
Separate electronic drive unit	YES
Sound pressure level	≤50 dB(A)
Ultimate pressure according to PNEUROP	< 1 · 10 ⁻⁷ hPa < 7.5 · 10 ⁻⁸ Torr < 1 · 10 ⁻⁷ mbar
Venting connection	G 1/8"
Weight	6.1 kg 13.45 lb

Order number	
HiPace® 300	PM P03 995

Accessories	
Adapters (electrical) Adapters and control cables	
Adapter cable, TCP 350 - backing pump relay box, M8	PM 061 376 -T
Adapter cable, TCP 350 - backing pump relay box, M12	PM 061 377 -T
Adapters (electrical) RS-232/485	
USB RS-485 converter	PM 061 207 -T
Cables Connection cables	
Connection cable from TCP 350 to HiPace with 2 accessory ports M8, 3 m	PM 061 353 -T
Connection cable from TCP 350 to HiPace with 2 accessory ports M12, 3 m	PM 061 356 -T
Cables Mains cables / Power cords	
Mains cable 230 V AC, CEE 7/7 to C13, 3 m	P 4564 309 ZA
Mains cable 115 V AC, NEMA 5-15 to C13, 3 m	P 4564 309 ZE
Mains cable 208 V AC, NEMA 6-15 to C13, 3 m	P 4564 309 ZF
Control Devices Backing pump	
Relay box for backing pumps, 1-phase 20 A for TC 110/120 and TCP 350, plug M8	PM 061 373 -T
Relay box for backing pumps, single phase 20 A for TC 400 and TCP 350, M12 plug	PM 061 375 -T
Relay box, shielded, for backing pumps, 1-phase 7A for TC 110/120 and TCP 350, plug M8	PM 071 282 -X
Relay box, shielded, for backing pumps, 1-phase 7 A for TC 400/1200, TM 700 and TCP 350, M12	PM 071 284 -X
Control Devices External drive units	
TCP 350, drive electronics	PM C01 740
TCP 350 PB, drive electronics, Profibus	PM C01 741
TCP 350 DN, drive electronics, DeviceNet	PM C01 742
Cooling Air cooling	
Air cooling for HiPace 300/450 with TC 110/120	PM Z01 301
Air cooling for HiPace 300 with TC 400	PM Z01 302
Air cooling for HiPace 300, 115 V	PM Z01 308
Air cooling for HiPace 300, 230 V	PM Z01 309
Mounting DN ISO-F, Mounting kits	
Mounting kit for DN 100 ISO-F, including coated centering ring, hexagon screws	PM 016 450 -T
Mounting kit for DN 100 ISO-F, including coated centering ring, splinter shield, hexagon screws	PM 016 451 -T
Mounting kit for DN 100 ISO-F, including coated centering ring, protective screen, hexagon screws	PM 016 452 -T
Mounting kit for DN 100 ISO-F, including coated centering ring, stud screws	PM 016 455 -T
Mounting kit for DN 100 ISO-F, including coated centering ring, splinter shield, stud screws	PM 016 456 -T
Mounting kit for DN 100 ISO-F, including coated centering ring, protection screen, stud screws	PM 016 457 -T
Mounting DN ISO-K/-F, sealings	
Centering ring with multifunction coating, DN 100 ISO-K/-F	PM 016 210 -U
Protection DN ISO-K/-F, sealings, splinter shields, protection screens	
Centering ring with multifunction coating and integrated splinter shield, DN 100 ISO-K/-F	PM 016 807 -U
Centering ring with multifunction coating and integrated protection screen, DN 100 ISO-K/-F	PM 016 212 AU

Accessories	
Protection Sealing gas throttles	
Sealing gas throttle for HiPace 300	PM Z01 317
Valves Fore-vacuum safety valves	
TVV 001, fore-vacuum safety valve, 230 V AC	PM Z01 205
TVV 001, fore-vacuum safety valve, 115 V AC	PM Z01 206
Valves Sealing gas valves, shielded (normally closed)	
Sealing gas valve, shielded for HiPace 300 with TC 110/120	PM Z01 311
Sealing gas valve, shielded for HiPace 300 with TC 400 and TM 700, TCP 350	PM Z01 312
Venting Power failure venting units (normally open)	
Shielded power failure venting unit, 24 V DC, G 1/8", for connection to TC 110/120	PM Z01 330
Power failure venting valve, shielded, 24 V DC, G 1/8" for connection to TC 400, TM 700 and TC 1200	PM Z01 331
Venting Venting accessories	
Flange with Pipe Thread, DN 16 ISO-KF, G 1/8"	PM 016 780 -T
Push-in fitting for 6 mm tube, G 1/8"	PM 016 781 -T
Push-in fitting for 8 mm tube, G 1/8"	PM 016 782 -T
Hose nozzle for 9 mm hose, G 1/8"	PM 016 783 -T
Banjo fitting	PM 016 787 -T
Screw-in flange, DN 10 ISO-KF, G 1/8"	PM 033 737 -T
Banjo fitting, small	PM 143 877 -T
TTV 001, Drier for Venting Turbopumps	PM Z00 121
Venting Venting valves (normally closed)	
Venting valve, shielded, 24 V DC, G 1/8", for connection to TC 110/120	PM Z01 290
Venting valve, shielded, 24 V DC, G 1/8", for connection to TC 400/1200 and TM 700	PM Z01 291
Venting valve, shielded, 24 V DC, G1/8" for connecting to TC 400, 1200 as well as TM 700 with an 270° angled plug	PM Z01 292
Vibration Reduction Vibration dampers	
Vibration damper for HiPace 300/400, DN 100 ISO-K/F	PM 006 459 AX



伯东企业（上海）有限公司
HAKUTO ENTERPRISES (SHANGHAI) LTD.
TEL: (86) 21-5046 3511 TEL: (86) 21-5046 1322

上海伯东 -- 您理想的真空合作伙伴！

伯东公司成立于 1953 年，外企上市企业，全球范围内有一千七百名员工，集团年营业额约为 100亿人民币。

伯东公司在国内主要城市：上海，北京，苏州，广州，深圳，成都及厦门设有营业据点。

上海伯东真空产品事业部已累计为超过 10,000 家企业提供真空服务

我们致力于追求高品质的服务，为您提供一流的服务及一流产品：

品质保障：国际知名品牌指定授权代理商，所有产品及部件保证 100% 原厂原装进口

现货交期快：部分产品有现货，下单立即发货（现货数量有限，实际情况请联系销售工程师）

卓越维修能力：伯东工程师拥有10年以上维修经验，且受国外专业培训，拥有完全的拆解，维修，校正能力。

完美服务质量：原装进口检测设备全方位寻找问题症结及全方面的性能测试，确保完美的服务质量



伯东企业（上海）有限公司 销售及售后服务中心

上海浦东新区新金桥路1888号36号楼7楼702室

电 话：+86-21-5046-3511 / 139-1883-7267

传 真：+86-21-5046-1490

官 网：<http://www.hakuto-vacuum.cn>



伯东企业（上海）有限公司 深圳办事处 销售中心

深圳市罗湖区宝安南路1036号鼎丰大厦501

电 话：+86- 0755-2547-3988. 643

传 真：+86-21-5046-1490

伯东企业（上海）有限公司 北京办事处 销售中心

北京丰台区芳群园四区22号楼金城中心705室

电 话：+86- 010-8768-4988

传 真：+86-21-5046-1490